

Note:

1.Material:

- 1.1 Housing: lcp
- 1.2 Contact:C5191,t=0.20mm
- 1.3 InnerShell: LCP
- 1.4 OutShell: SUS304

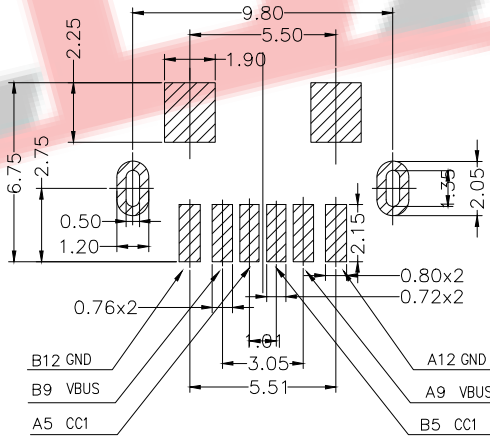
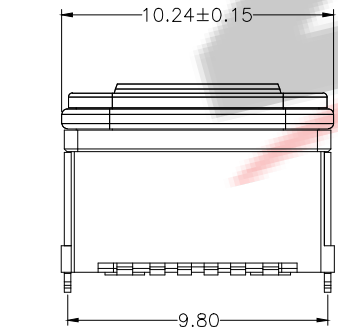
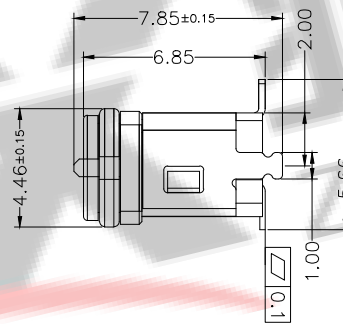
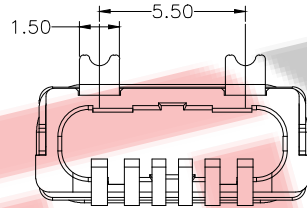
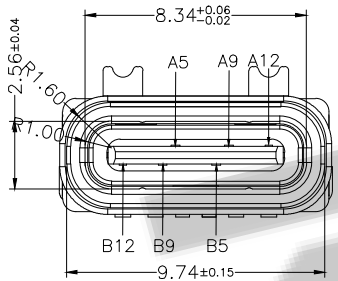
2.ELECTRICAL:

- 2-1:CURRENT RATING:
VBUS AND GND CONTACTS RATED AT 1.5A
PARALLELED FOR A TOTAL OF 3A;
- 2-2:INITIAL CONTACT RESISTANCE :40 MEGOHMS
- 2-3:DIELECTRIC WITHSTANDING VOLTAGE:
100V AC MIN;

3:MECHANICAL CHARACTERISTICS:

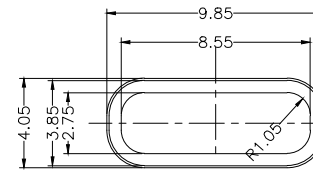
- 3-1:MATING FORCE:5~20N
- 3-2:UNMATING FORCE:8~20N(INITIAL),
6~20N(AFTER 10000 CYCLES)
- 3-3:FREQUENCY: 200±50 CYCLES /HOUR,10000 CYCLES
- 3-4:OPERATING TEMPERATURE ;-40°~80°.

4: WATERPROOF: IPX7.



PCB LAYOUT 图仅供参考

防水圈



Capdimensions

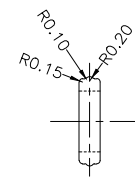
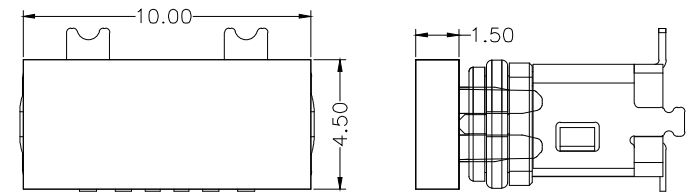


TABLE B

A5	CC1	B12	GND
A9	VBUS	B9	VBUS
A12	GND	B5	CC2
PIN	SIGNAL NAME	PIN	SIGNAL NAME

ZDX 深圳市兆达鑫科技有限公司
Shenzhen Zhao Xin Technology Co., Ltd.

TOLERANCE: XX ±0.30 X:XX ±0.20 X:XXX ±0.10 X:.. ±0.10 X:.. ±0.08	DRAWN BY : 刘志强	DATE : 2015.08.18	PART NAME: TYPE-C6P防水立式贴板全塑H6.8
UNIT: mm [inch]	CHECKED BY: 李毅	DATE : 2015.08.18	PART NO. SEE TABLE
SCALE:1:1 SIZE: A4	APPROVED BY: 张少辉	DATE : 2015.08.18	MOLD NO.
			DRAW NO: ZDHS0600FS223
			SHEET NO. 1 OF 1