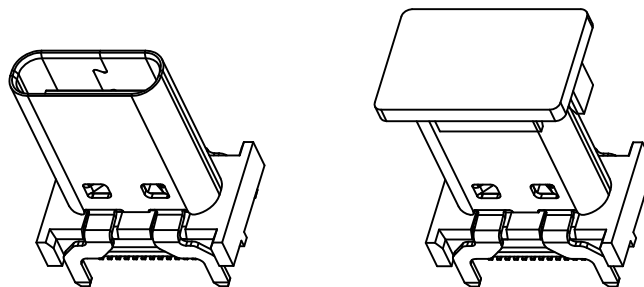
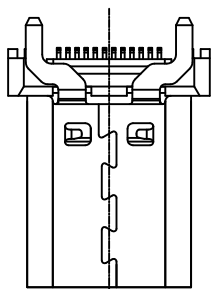
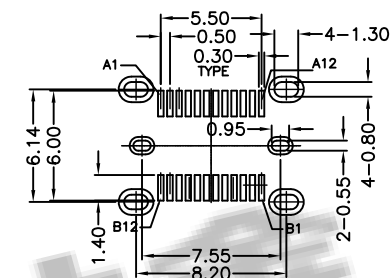


H= 13.0 13.5 15.0

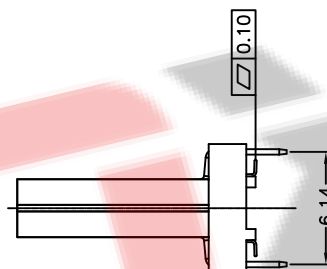
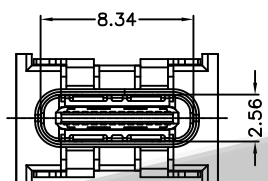


WITHOUT COVER WITH COVER



RECOMMEND P.C.B LAYOUT(COMPONENT SIDE)

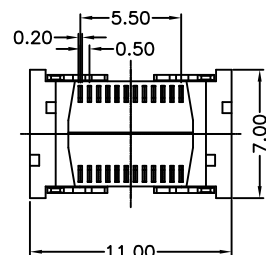
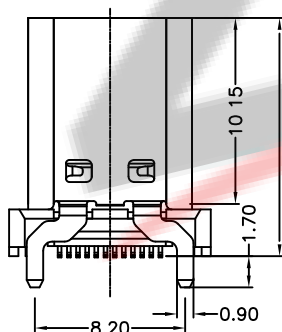
TOLERANCE FOR PCB LAYOUT IS ± 0.05  
KEEP OUT AREA



USB TYPE-C FULL-FEATURED RECEPTACLE INTERFACE PIN ASSIGNMENTS

PIN	Signal Name	Description	PIN	Signal Name	Description
A1	GND	Ground return	B12	GND	Ground return
A2	SSTxp1	Positive half of first SuperSpeed TX differential pair	B11	SSRXp1	Positive half of first SuperSpeed RX differential pair
A3	SSTxn1	Negative half of first SuperSpeed TX differential pair	B10	SSRXn1	Negative half of first SuperSpeed RX differential pair
A4	Vbus	Bus Power	B9	Vbus	Bus Power
A5	CC1	Configuration Channel	B8	SBU2	Sideband Use (SBU)
A6	Dp1	Positive half of the USB 2.0 differential pair-Position 1	B7	Dn2	Negative half of the USB 2.0 differential pair-Position 2
A7	Dn1	Negative half of the USB 2.0 differential pair-Position 1	B6	Dp2	Positive half of the USB 2.0 differential pair-Position 2
A8	SBU1	Sideband Use (SBU)	B5	CC2	Configuration Channel
A9	Vbus	Bus Power	B4	Vbus	Bus Power
A10	SSRXn2	Negative half of second SuperSpeed RX differential pair	B3	SSTXn2	Negative half of second SuperSpeed TX differential pair
A11	SSRXp2	Positive half of second SuperSpeed RX differential pair	B2	SSTXp2	Positive half of second SuperSpeed TX differential pair
A12	GND	Ground return	B1	GND	Ground return

- Contact Resistance: 40mOHM Max.;
- Dielectric Withstanding Voltage: 100V AC For 1 Minute;
- Insulation Resistance: 100M OHM Min.;
- Mating And unmating Force:  
Mating Force: 5~20N  
Unmating Force: 8~20N(0~1000cycle);  
6~20N(1001~10000cycle);
- Durability: 10000 Cycles;

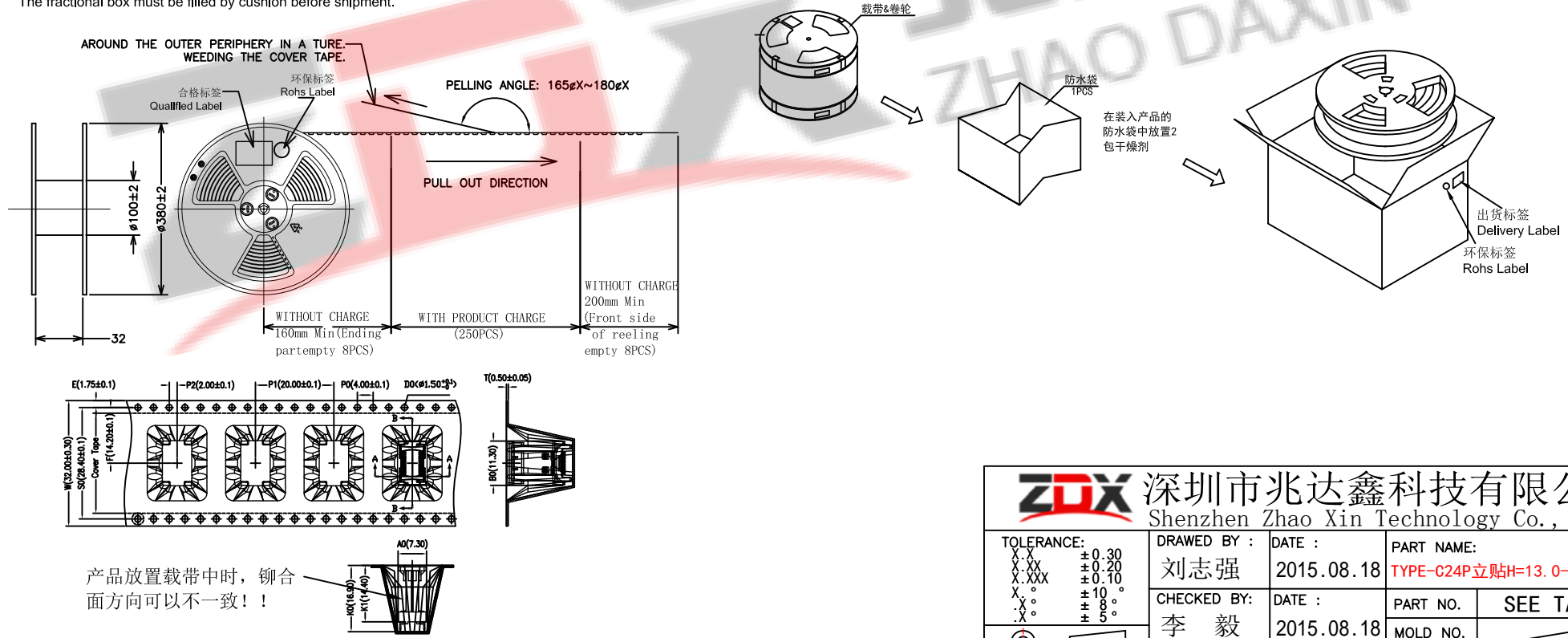


Item	Title	Material	Dispose	Remark
1	Shell	Stainless Steel	Ni:30u" Min.	
2	GND Plate	Stainless Steel		
3	Mid Plate	Stainless Steel	Solder Tails: Matt Tin	
4	Top Contact	Copper Alloy	Mating Area: See P/N	
5	Bottom Contact	Copper Alloy	Solder Tails: Matt Tin	
6	Insulator	High Temperature Plastic	UL 94V-0	Black

**ZDX** 深圳市兆达鑫科技有限公司  
Shenzhen Zhao Xin Technology Co., Ltd.

TOLERANCE: X.XX ±0.30 X.XXX ±0.20 X.XXX ±0.10 X.XX ±0.10 X.X ±0.05 X.X ±0.05	DRAWN BY : 刘志强	DATE : 2015.08.18	PART NAME: TYPE-C24P立贴H=13.0-13.5-15.0	
UNIT: mm [inch] SCALE: 1:1 SIZE: A4	CHECKED BY: 李毅	DATE : 2015.08.18	PART NO.	SEE TABLE
	APPROVED BY: 张少辉	DATE : 2015.08.18	MOLD NO.	
			DRAW NO:	ZDJNKJ00002408
			SHEET NO.	1 OF 1

包装规范说明:		类别 Type	包装规范 Packaging Spec.	适用客户 Cus.	全部	适用产品 Item	USB 3.1 TYPE C FEMALE	包装类别 Type	卷装/Reel	Product spec:WI-PE-
1. 如图所示首先CARRIER TAPE (载带) 需先预留8PCS空格后方可置入成品,并附COVER TPAE(上带)覆盖于上,再配合带装机自动卷绕于REEL(塑胶卷轴)收料。 As shown from picture, the initial starting carrier need to be emptied for 8 pcs, then put connector on Inth carrier; Then cover it with Cover Tape, and Reeling it with Reel auto machine.										
2. 在定量包装完成后,前端CARRIER TAPE亦需预留8PCS空格,而COVER TPAE配合CARRIER TYPE长度覆盖后,并须再超出200mm以上,最后以啉拉贴固,并于REEL盘上方贴合格标签和ROHS标签各一张。 In the end of the Reel, need to empty 8 pcs carrier tape; After covering the carrier, then the Cover Tape need to be 200mm longer, and use tape to fix the cover tape to the reel. Put "RoHS label" and "Qualified Label" on the tape.										
3. 注意:COVER TAPE不可浮起或有贴附不顺,歪斜及成品放置方向错误之现象。 Attention: no deformation of Cover Tape is allowed (protruded plastic, or not smooth, bednt or product is wrong positioned)										
4. 在纸箱内左右,前后侧各放入一块三角卡板,每个PE袋中装入8个REEL盘,并在PE袋中放入2PCS干燥剂,用胶带封好.在每个纸箱内装入10PCS卷盘,共1叠.盖上箱盖后以胶带封箱,于侧位置贴出货标签和RoHS标签各一张。 Inside of carton, at left and right side, put triangle fixed card; Put 10Reels to PE bag, and put 1 bags of desiccant inside the PE bag. Each carton has 8 reels. Put "RoHS label" and "Delivery label" on side of the carton.										
5. 零箱部分, 出货时须用缓冲物填满。 The fractional box must be filled by cushion before shipment.										
NO.	包材名称 Items	包材料号 Item no	用量 Usage	适用类别 Series	备注 / Remark					
①	纸箱 Carton	PE061	1	广东省外,K=K	400*400*310mm					
②	PE Bag	P120090-01	1		800*700*0.05mm					
③	carrier tape	PB265	8		W=32mm PET 透明L=5.32M					
④	cover tape	P120251-01	/		W=25.5MM,300m/r透明色					
⑤	塑胶卷轴 Plastic Reel	PB021	8		Ø380mm,W=37mm					
⑥	干燥剂 Desiccant		4							
⑦	环保标签 Rohs Label		9							
⑧	合格标签 Qualified Label		8		80*35mm					
⑨	出货标签 Delivery Label		1		80*50mm					



**ZDX** 深圳市兆达鑫科技有限公司  
Shenzhen Zhao Xin Technology Co., Ltd.

TOLERANCE: X.X ±0.30 X.XX ±0.20 X.XXX ±0.10 X.XX ±10° X.X ±5°	DRAWN BY : 刘志强	DATE : 2015.08.18	PART NAME: TYPE-C24P立贴H=13.0-13.5-15.0
 UNIT: mm [inch] SCALE: 1:1 SIZE: A4	CHECKED BY: 李毅	DATE : 2015.08.18	PART NO. SEE TABLE
	APPROVED BY: 张少辉	DATE : 2015.08.18	MOLD NO.
		DRAW NO.: ZDJNKJ00002408	SHEET NO.: 1 OF 1